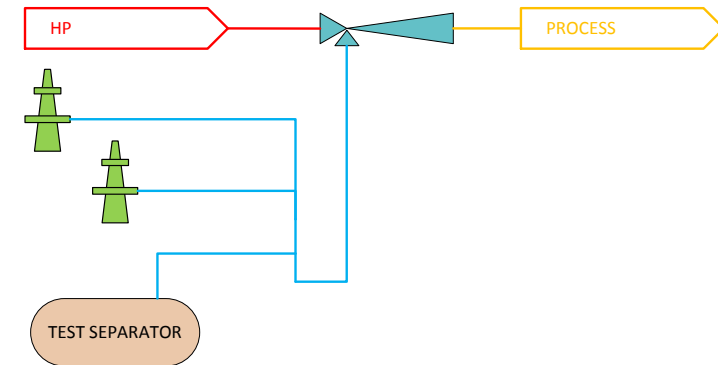
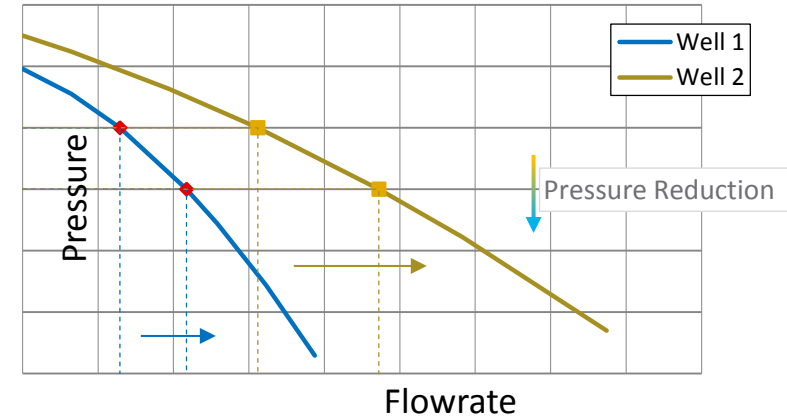


# Production Boosting

- Lowering the FWHP creates an increase in production determined by the IPR curve
- SJP lowers the flowing pressure, delivering the fluids to production systems



## Malaysia - Offshore

### Issue

- Multiple wells under-performing or shut-in
- Production manifolds across pipe bridge

### Solution

- Using HP gas from compressor to power the jet pump enabled production of **16 wells**
- 10 bar pressure reduction / boost
- HP gas from compressor recycle at 100 barg

### Benefits

- Incremental production of 14 mmscfd
- Additional connection to test separator enabled liquid unloading at low pressures
- Increased the producing life and stability of the LP wells

